

Chamber On The Mountain

An extraordinary musical experience
in a setting of extraordinary beauty

*Presented by the Happy Valley Cultural Center
under the Artistic Direction of renowned harpist Heidi Lehwalder.*

Chamber On The Mountain honors the traditional
while celebrating the innovative and the intermingling
of nascent talent with venerated masters.

Upcoming

in our Chamber On The Mountain Music Series

Mayuko Kamio, Violinist

Sunday, May 7, 2017 / 3:00 pm

Jill Felber, Flutist and Dianne Frazer, Pianist

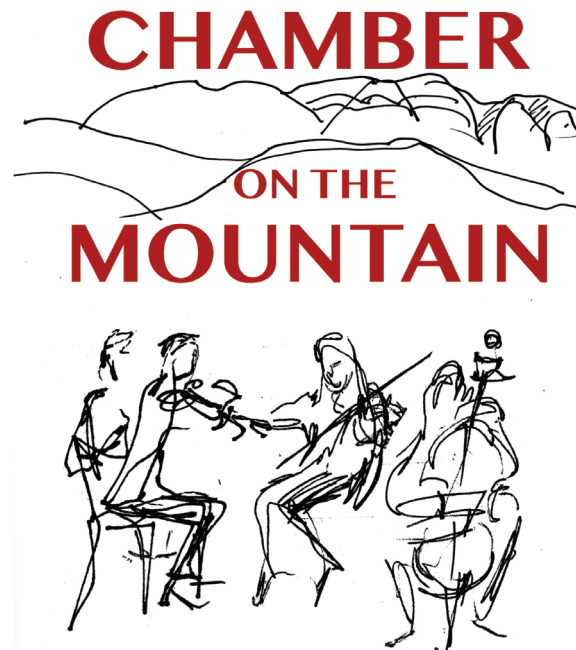
with Heidi Lehwalder, Harpist

Sunday, September 24, 2017 / 3:00 pm

Advance Reservations Available Now for all Upcoming Performances

Visit www.ChamberOnTheMountain.com

The Happy Valley Cultural Center Presents



Sang-Eun Lee, Cellist

with Carlos Avila, Pianist

Sunday, March 5, 2017

3:00 pm / Logan House

8585 Ojai-Santa Paula Rd.

Ojai, CA 93023

(805) 646-9951

www.ChamberOnTheMountain.com



Photo: Matt Dine

Sang-Eun Lee, Cellist

22-year-old cellist Sang-Eun Lee has been hailed for her expressive artistry and dazzling technique. *The Washington Post* praised: “*She is a prodigiously talented young artist with powerful technique and musical poise.*”

Ms. Lee has won top prizes in various international competitions; she won the 2014 Young Concert Artists International Auditions, and First Prize at the 2014 YCA Auditions in Seoul, Korea. At 15, she won First Prize at the 2009 Johansen International Competition in Washington, D.C., Second Prize at the 2009 International Tchaikovsky Competition for Young Musicians, and the Young Musician Prize of the Emanuel Feuermann Competition in Berlin. She

was also awarded Germany’s Kronberg Academy Cello Festival’s 2009 Ingrid zu Solms Culture Prize.

Her 2016-2017 season includes performances at the Morgan Library and Museum, Boston’s Isabella Stewart Gardner Museum, Cold Spring Harbor Laboratory, Chamber on the Mountain, Tri-County Concert Association, the Evergreen Museum and Library, and an appearance as soloist with the Orchestra of St. Luke’s at Alice Tully Hall. Last season, Ms. Lee made her acclaimed Kennedy Center debut, co-presented with Washington Performing Arts and supported by the Korean Concert Society Prize, and her New York recital debut, sponsored by the Michaels Award, on the Young Concert Artists Series. She also performed at Colgate University, Buffalo Chamber Music Society, the Paramount Theatre, the Jewish Community Alliance in Florida, the Lied Center of Kansas, and the Music@Menlo Festival.

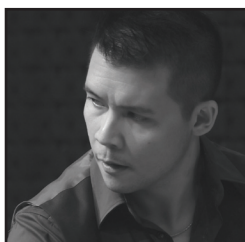


Photo: Pat Jarrett

Carlos Avila, Pianist

Hailed for his “beautiful command of tone and mood...and unruffleable savoir-faire” (*San Francisco Chronicle*), his “layers of emotional expression” (*The Examiner*) and his “level of artistry that seem far beyond his years” (*Contra Costa Times*), Carlos Avila is one of the most in-demand pianists on the classical music scene. His concerts have taken him across North and South America, Europe, and Asia.

Carlos began his professional career in 2001 when he stepped in for an ailing Stewart Goodyear at 24-hours-notice to play the Rachmaninoff First Piano Concerto with the California Symphony – a “pinch-hit homerun” (*San Francisco Chronicle*).

Since then, Carlos has been a guest at festivals such as Schleswig-Holstein, Tanglewood, Sarasota, Aspen, Banff, Music Academy of the West, Pianofest, Holland, ChamberFest Dubuque, Atlantic Music Festival, Lake George, and the Carnegie Hall Workshops where he had the opportunity to work and study with the late Isaac Stern, Daniel Barenboim, Michael Tilson Thomas, Emanuel Ax, Richard Goode and members of the St. Lawrence, Tokyo, Guarneri, Juilliard, Ying, and Borodin String Quartets.

Sang-Eun Lee, Cellist

with Carlos Avila, Pianist

Program

Fantasiestucke, Op. 73

Robert Schumann (1810–1856)

Zart und mit Ausdruck

Lebhaft, leicht

Rasch und mit Feuer

Sonata No. 3 in A Major, Op. 69

Ludwig van Beethoven (1770–1827)

Allegro ma non tanto

Scherzo. Allegro molto

Adagio cantabile – Allegro vivace

Intermission

Sonata in D minor, Op. 40

Dmitry Shostakovich (1906–1975)

Allegro non troppo

Allegro

Largo

Allegro

Sang-Eun Lee is represented by Young Concert Artists, Inc.

Meet the Artists!

A reception will be held on our patio immediately following the performance.